

FTC 350 - Double Obstruction L-810 LED Assembly



FTC 350 Product Overview:

The FTC 350 OL2 system is comprised of an FAA powered photocell that is connected in series with the OL2 dual L-810 (ICAO Type B low intensity) side marker fixtures or the L-864 (ICAO Type C medium intensity) red beacon. The unit does not have alarm dry contact outputs and is designed to activate the lights during nighttime operation and to de-activate the lights during daytime operation per FAA transition requirements. An MOV has been installed in the photocell to provide protection against line voltage surges. The FTC 350 is intended to be used for any quantity and any style of L-810 side lights and/or L-864 beacons as long as the maximum 1800 VA is not exceeded.

Physical Specifications:

Photo Control:

F4902350 / Dimensions - W x H - 3.07 in x 2.15 in

F4902351 / Dimensions - W x H - 3.07 in x 2.15 in

Performance Specifications:

Photo Control:

F4902350 / AC Voltage - 120V, 1800 VA (15 amps)

F4902351 / AC Voltage - 240V, 1800 VA (7.5 amps)

Spare Parts list:

F4901241

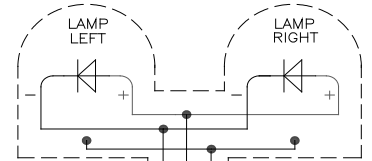
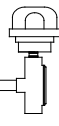
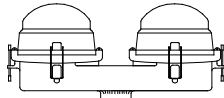
Photocontrol socket

F4902350

Photocontrol 120V

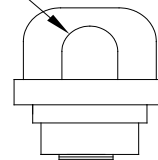
F4902351

Photocontrol 240V



#18 WHT
#18 BLK
#18 GRN

WINDOW



#18 BLK
#18 WHT
#18 GRN

#18 BLK
#18 WHT
#18 GRN

POWER SOURCE CABLE,
(FURNISHED BY OTHERS)

TO CUSTOMER'S 20 VA POWER SOURCE,
CHECK NAMEPLATE RATING FOR PROPER INPUT VOLTAGE.
FOLLOW LOCAL ELECTRICAL CODES.