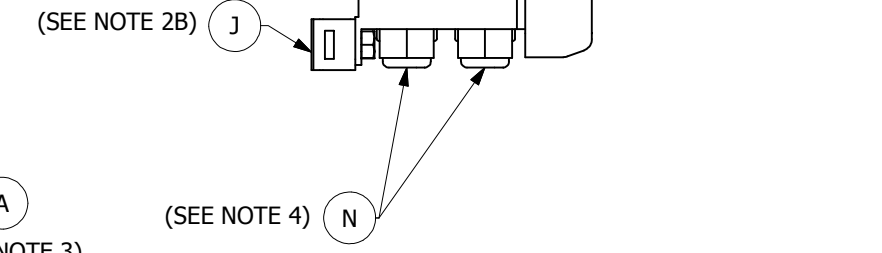
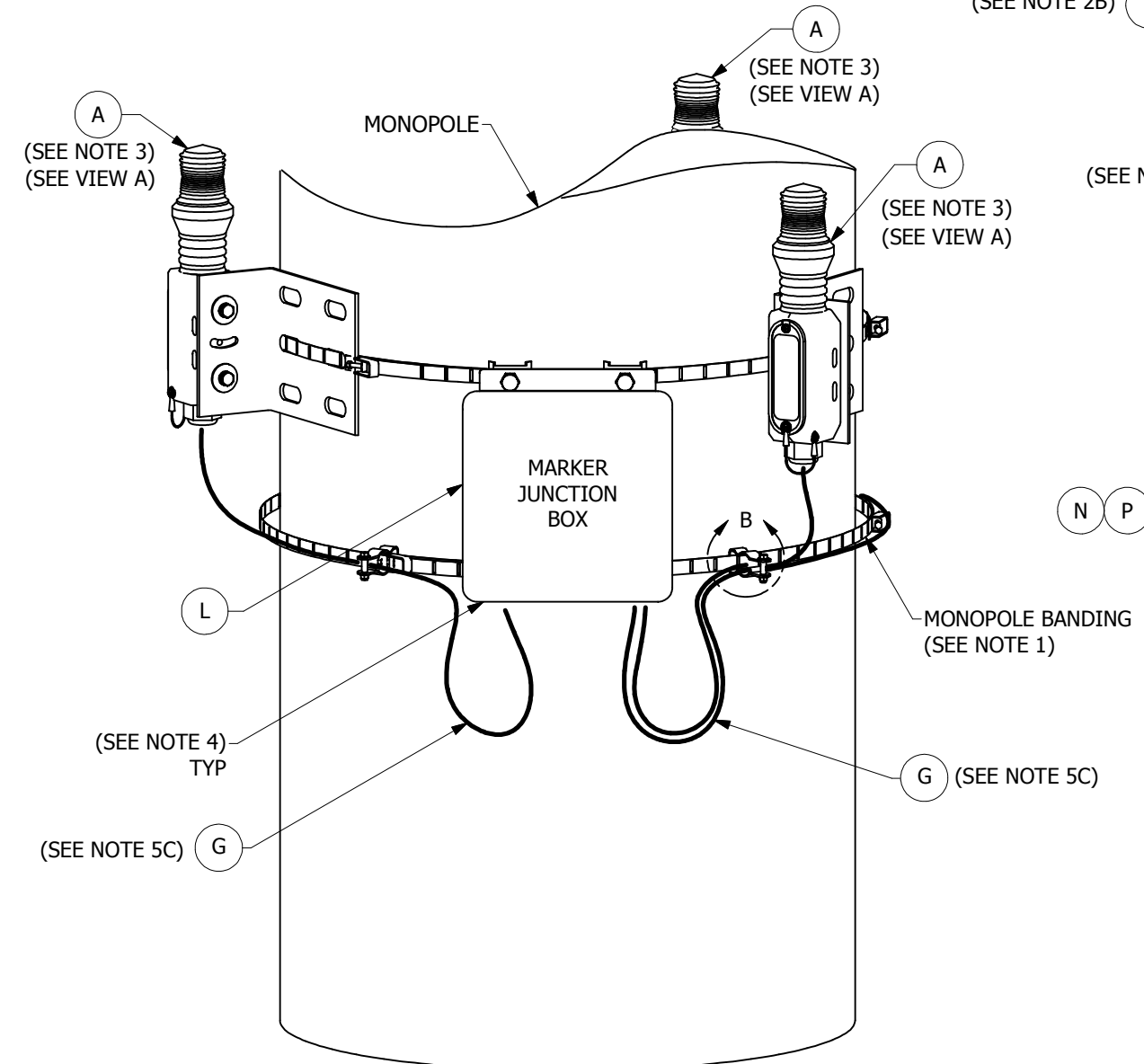
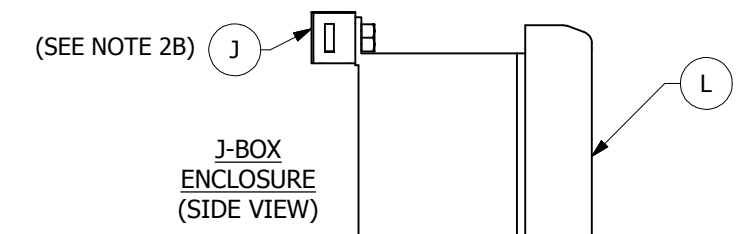
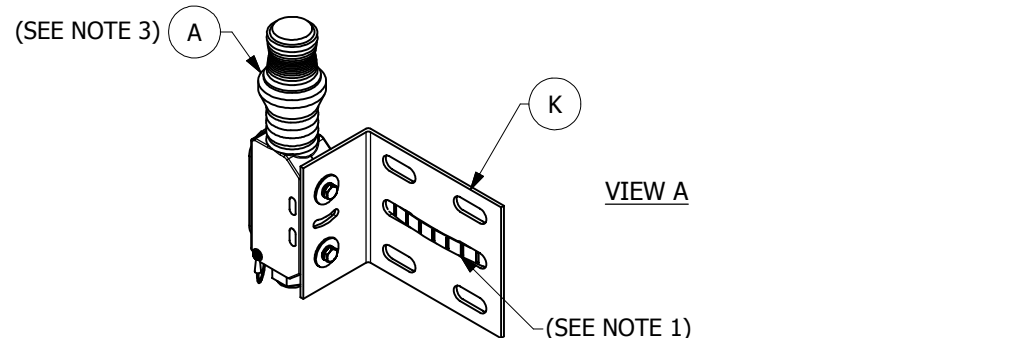
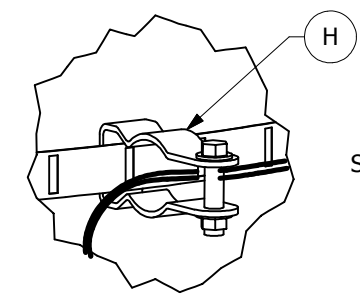
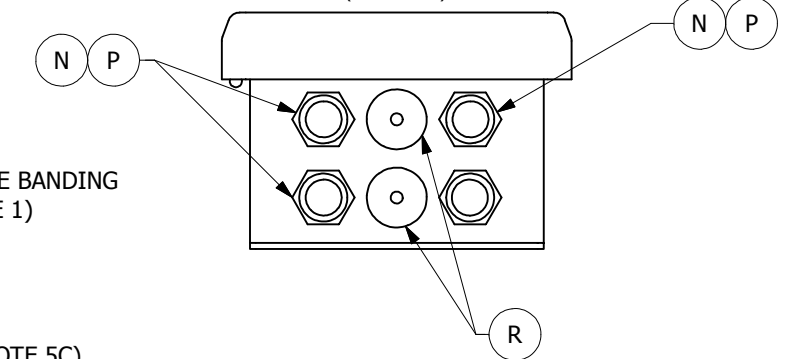


REVISIONS						
ZONE	REV	ECO	DESCRIPTION	REV	DATE	APPR B
	A	5814	PRODUCTION RELEASE	SPS	03/06/14	HK
	B	5861	ADDED ITEM A2 MKR 370 AC IR	SPS	05/20/14	HK
	C	6294	UPDATED MARKERS AND BOM	SG	12/21/16	HK

BILL OF MATERIAL						
ITEM	P/N	DESCRIPTION	COMPONENT QTY		UNITS	
			2 MKR	3 MKR		
	F190XXXX	MARKER L810 MKR 37X KIT	2	3	EA	
A	F11190XX	MARKER L810 MKR 37X	2	3	EA	
B	INCLUDED IN ASSEMBLY	F1903120	MKR 370 ADJUSTABLE STRAP KIT VANGUARD (NOT USED)	2	3	EA
		F5990252	CLAMP ADJUSTABLE 2" - 10" (NOT USED)	4	6	EA
C	F79042XX	MARKER QUICK START GUIDE (NOT SHOWN)	1	1	EA	
	F1137XXX	MKR 37X HARDWARE KIT MONOPOLE CHAIN	1	1	EA	
D	F5900905	TAPE, ELECTRIC, 2"	1	1	EA	
E	F5900906	TAPE, FILAMENT, 1"	1	1	EA	
F	F5991728	TAPE, 0.75" BLACK ELECTRIC	1	1	EA	
G	F431XXXX	CABLE TRAY RATED 18AWG/3C, 60 FT	1	1	EA	
H	F5991774	CONDUIT HANGER WITH BOLT 1/2- 4 IN	6	6	EA	
J	F5991776	BRACKET BAND FLARED LEG WITH BOLT 1/2 IN	4	4	EA	
	F1903130	MKR 37X ADJUSTABLE BRACKET KIT	3	3	EA	
K	INCLUDED IN ASSEMBLY HARDWARE	F3991370	BRACKET MKR 37X	3	3	EA
		F5901141	WASHER LOCK 1/4 SS	6	6	EA
		F5901101	WASHER FLAT 1/4 X 1	6	6	EA
		F5990761	SCREW 1/4-20 X 3/4 PPH	6	6	EA
	F1136107	HARDWARE KIT MARKER ENCLOSURE ASSY	1	1	EA	
L	F3136105	MARKER JUNCTION BOX (SEE NOTE 2)	1	1	EA	
	F5991775	MARKER BOX MOUNTING ASSEMBLY HARDWARE (NOT SHOWN)	2	2	EA	
M	INCLUDED IN ASSEMBLY HARDWARE	F5900759	SCREW, 1/4-20 X 1" PPH	4	4	EA
		F5901102	FLATWASHER, 1/4"	8	8	EA
		F5900436	NUT, ELASTIC STOP, 1/4"-20	4	4	EA
N	F5903170	CORD CONNECTOR 1/2" BLACK PLASTIC	4	4	EA	
P	F5991690	LOCKNUT, 1/2" CONDUIT	4	4	EA	
R	F5902390	HOLE PLUG/CORD GRIP - 0.50"	2	2	EA	



ITEM L
MARKER JUNCTION BOX
BOTTOM VIEW
(SEE NOTE 4)



FH CABLE NOT SHOWN
GND CABLE NOT SHOWN

MARKER INSTALLATION MONOPOLE BANDING (3 MARKERS SHOWN)

*SEE BOM AND PACKING SLIP FOR DETAILS

INSTALLATION NOTES

- BANDING MOUNT INSTALLATION :**
CUSTOMER TO PROVIDE MONOPOLE BANDING AND HARDWARE.
- MARKER JUNCTION BOX INSTALLATION :**
A) LOCATE AND INSTALL MARKER JUNCTION BOX (L) TO BRACKET BAND FLARED LEG (J).
B) LOCATE AND INSTALL MONOPOLE BANDING (NOT PROVIDED BY FLASH TECHNOLOGY) THROUGH CENTER SLOTS ON BRACKET BAND FLARED LEG (J).
- INSTALLING MARKER FIXTURE:**
A) EVERY EFFORT SHOULD BE MADE TO INSTALL MARKER (A) VERTICAL HOWEVER PERMISSIBLE MARKER ANGLE IS UP TO 5°.
B) LOCATE AND INSTALL MARKER BRACKET (K) AT CENTER SLOT LOCATION ONTO MONOPOLE BANDING (NOT PROVIDED BY FLASH TECHNOLOGY).
- INSTALLING CABLE (G) THROUGH CORD GRIPS:**
A) INSERT CABLE (G) THROUGH CORD GRIP (N), LEAVING ENOUGH CABLE LENGTH TO MAKE ELECTRICAL CONNECTIONS.
B) FROM THE OUTSIDE OF THE MARKER JUNCTION BOX, TIGHTEN CORD GRIP (N) TO SECURE CABLE (G),
- INSTALLING CABLE (G) AND ELECTRICAL CONNECTIONS :**
A) DIRECT ALL CONNECTING CABLES DOWN AND AWAY FROM MARKER INTERFACE ENCLOSURE, TO PREVENT MOISTURE FROM ENTERING THE BOX.
B) SECURE ALL CABLES USING THE STANDARD 2-3-4 TAPING METHOD (D & E) AS DIRECTED IN EQUIPMENT MANUAL.
C) INSTALL A DRIP LOOP, FOR CABLE, NEAR THE MARKER JUNCTION BOX AND AT EACH MARKER FIXTURE.
D) FLASHHEAD AND GROUND CABLES TO BE INSTALLED PER MANUAL.
E) REFER TO MARKER QUICK START GUIDE (C) FOR PROPER ELECTRICAL CONNECTIONS.
- TECHNICAL SUPPORT:**
FOR TECHNICAL SUPPORT CALL "NOC" (1-800-821-5825).

UNLESS OTHERWISE SPECIFIED DIMENSIONS ARE IN INCHES TOLERANCES:		ENGINEERING - PROPRIETARY		Flash Technology	
.XX DECIMAL	.XXX DECIMAL	DRAWN BY: SPS	DATE: 03/06/14	TITTLE	
± 0.02	± 0.010	CHECKED BY: HK	DATE: 03/06/14	MKR 37X	
ANGLES ± 1'	SURFACE QUALITY ✓ MAX	ENGINEER: HK	DATE: 03/06/14	MONOPOLE BANDING	
MATERIAL: SEE BOM		THIRD ANGLE PROJECTION		INSTALLATION DRAWING	
FINISH: NA		SCALE: NTS		SIZE D	DWG NO: 7790114
APPLICATION		SHEET: 1 OF 1		REV	C

COMPANY CONFIDENTIAL: INFORMATION CONTAINED HEREIN IS CONFIDENTIAL. IT IS THE PROPERTY OF SPX CORPORATION. IT IS TO BE USED SOLELY FOR THE PURPOSE PROVIDED, AND IT IS NOT TO BE DISCLOSED TO OTHERS WITHOUT THE PRIOR WRITTEN CONSENT OF SPX CORPORATION.