

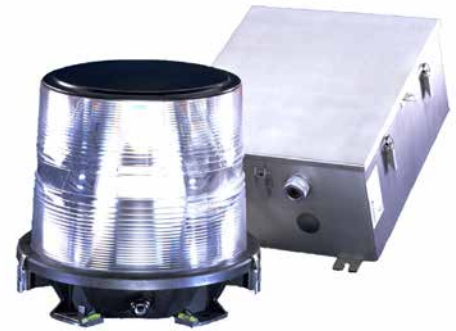
# FT 736 Heliport Acquisition Beacon

The FT 736 provides highly conspicuous heliport acquisition by flashing an omnidirectional white Morse code "H" (four flashes spaced 2/15 of a second apart at two-second intervals). This flashing pattern readily distinguishes this beacon from other lighting in the area.

## Maintenance

An extensive instruction manual and drawings are provided with each system. Trained technical support staff and information on support programs are readily available through the National Operations Center (NOC) services department. Onsite training through Flash University is also available.

Flash Technology meets the Buy American Act with all our airport lighting systems.



### FLASHHEAD - FH 710

High	12,000 ECD
Medium	2,000 ECD
Low	75 ECD
Aerodynamic Wind Area	0.93 ft <sup>2</sup> (0.0864 m <sup>2</sup> )
Vertical Beam	17°
Horizontal Coverage	360°

### POWER CONVERTER - PC 736

Power Consumption	130 watts
Input Voltage	120, 208, 240 volts, 60Hz, or 230 volts 50Hz, single phase (specify on order)
Status Relays	Form C contacts; contacts change state on fail